

Clinical / Radiographic Follow-Up

Post-operatively the bilateral arm pain had improved and the neck pain was better. Follow-up radiographs at 3 (Figure 3.) and six months (Figure 4.) showed good sentinel signs and the six month film showed good consolidation.



Figure 3. **3 month** post-operative radiograph



Figure 4. **6 month** post-operative radiograph

A CT scan was performed at 4 months which showed fusion at both operated levels.

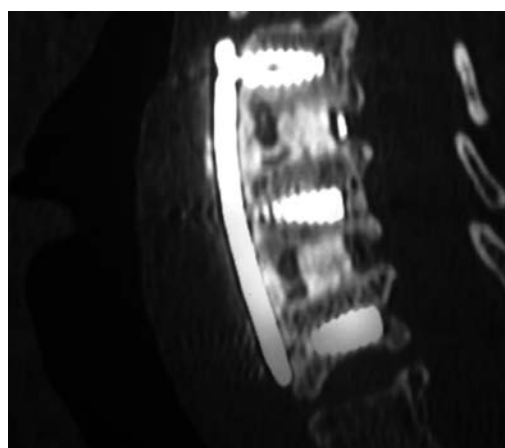
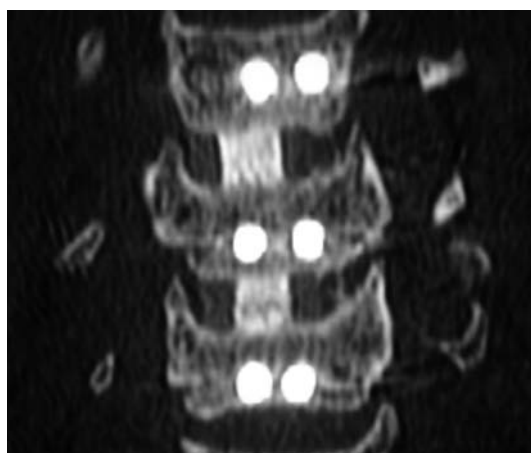


Figure 5 (a, b). CT scans at **4 months** showing fusion

At six months the patient is now asymptomatic and pleased with the outcome of the surgery. The graft material used in this case was Actifuse™.

*Actifuse is a unique silicated substituted bone graft which has been shown to produce:
More bone, less time*

370 Centennial Park,
Elstree, Hertfordshire,
WD6 3TJ
UKwww.apatech.com

ApaTech, Inc.
2 Hampshire Street,
Foxborough,
MA 02035,
USA
Tel: 866-652-0700
(toll-free)

ApaTech
better bone by design